



# Critical Alarm Monitoring System APLUS SERIES



Model: AM910 & AC1000

## OVERVIEW

Monitoring and control system today requires real-time performance, remote access and use of mobile technology for anywhere, anytime fault and alarm notification. This is crucial for an effective and timely management of equipment, facilities or services. Aplus Series have been designed to do all that and more. It interfaces to any equipment or device to provide wireless SMS alerting, remote monitoring and control. Aplus is simple to use yet is packed with powerful functionalities to meet a wide ranging industrial and commercial applications.

## SMS ALERT

Continuous monitoring of the alert signals and send SMS message alert upon detection of any alert triggered

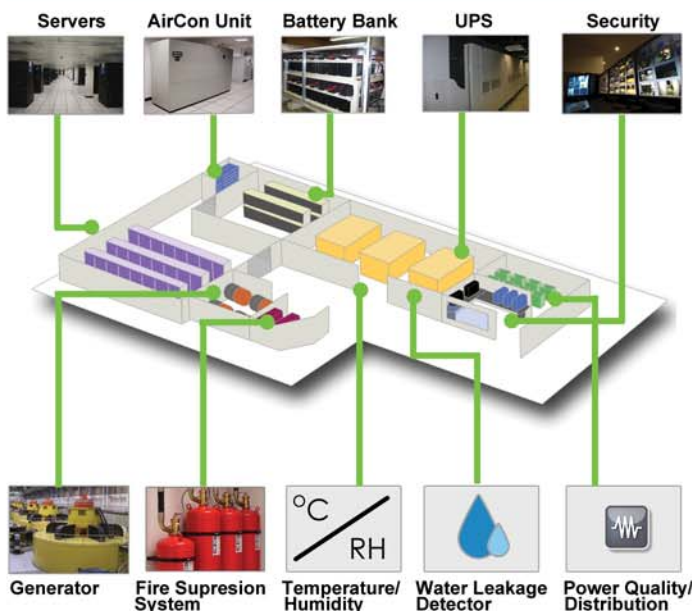
Inform instantly by SMS message on your mobile phone anytime, anywhere



## BENEFITS

- Easy to install, operate and maintain
- Low maintenance
- Low cost of ownership
- 24 x 7 operation
- Dedicated standalone operation
- No need to use PC or any external application software
- Open standards protocol, easy for external application interface

## DATA CENTRE - TYPICAL SETUP



## FEATURES

- Standalone - full functionality housed in one small and robust chassis
- User-friendly terminal emulator program, eg. HyperTerminal
- RS232 serial cable configuration
- 8 protected universal digital inputs. Accepts dry contact or voltage input up to 24 volts
- 4 digital outputs - open collector transistor output
- Internal supervisory circuit ensures high operational reliability
- Configurable SMS repeat interval
- Remote add/edit/delete phone group, & repeat time
- Remote query of phone group, input & output status
- Remote On / Off via SMS command
- Remote Pulse via SMS command
- Time stamping on all alarm input triggers

## APPLICATIONS

- **Data Centre**  
(UPS, Air-con, Router, Server, Fire alarm panel, Generator, Water leakage detector, Security, Lighting, Power quality / distribution, Etc)
- **Manufacturing Process**  
(Process error, PLC, Sensor, Machine status, Vision, Alarm signals, Vacuum, Electric transformer, Pressure valve, Gas tank, Over voltage, Etc)
- **Telecommunication**  
(Power, Water leakage detector, Air-con, UPS, Etc)
- **Fire and Security**  
(Door Sensor, Smoke detector, Alarm panel, Annunciator)
- **Facility Maintenance**  
(Lift, Elevator, Pump, ATS, Gen Set, Chiller, HVAC, HT/LT, Oil temperature, Oil pressure, Water level, Etc)
- **Energy & Power Management**  
(Voltage sag, Over voltage, Under voltage, Power outage, DC system)
- **Environmental**  
(Temperature, Humidity, Co2, Wind speed, Water, Etc)
- **HVAC**  
(Run, Trip, Fault, Etc)
- **M & E Facility Management**  
(Tracking, Maintenance, Etc)
- **Other mission critical application**

# APLUS SERIES

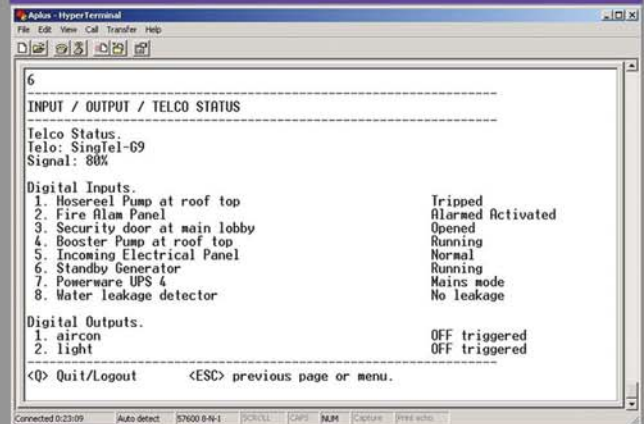
Model: AM910 & AC1000

## SPECIFICATIONS

Product Name	Aplus Messenger II	Aplus Communicator
Model	AM910	AC1000
Operating Voltage	9-30VDC, 2W	
No of Inputs	8 digital protected inputs, volt-free / dry contact	
No of Outputs	4	
Communication Port	Serial Terminal Emulator	
GSM Modem	Dual Band GSM 900/1800 Mhz class (2W at 900Mhz) Class 1 (1W at 1800 Mhz) Tri-Band available	
Configurable Mobile No	Up to 6 + 1 Mobile Phones (Accepts International Phone number format and support AutoRoaming)	
Remote Setting	Remotely add, change, delete mobile number via SMS (Authorization required)	
Remote Control	Remotely turn ON / OFF/ PULSE devices using SMS	
Configurable SMS Msg	User configurable for all input and output messages	
Forwarding	Forwarding of events to a specified number for remote logging purpose	
Humidity	0-90% non-condensing	
Operating Temperature	0 - 55 degree celsius	
Physical Size	82 (L) x 25 (H) x 110 (D) mm	
Weight	345 gm	
Security Features	Password protected access and phone number checks	
Real Time clock	Date time with battery backup	
System Health Check	Remote Health check feature via SMS	
I/O Status	Remote I/O query via SMS	
Indicators	Power, Telco Network, Signal Low, Other error	
Repeat SMS Alarms	User Configurable	
IO Interface	3.8mm pitch pluggable screw terminal block	
Self Diagnostic Feature	Standard Feature	
Remote Event Log	Yes	

In the interest of product development, specifications are subject to changes without prior notice

## CONFIGURATION - HyperTerminal



## OPTIONAL - ACCESSORIES

### Intelligent DC Supply/ Charger



- Model** : DPC-1204E
- Input** : 230VAC
- Output** : 12V, 3A max, 1A continuous
- Battery** : 12V, 4AH Sealed Lead Acid (External)
- Dimension** : 160(d) x 150(w) x 65(h) mm
- Weight** : 350g (charger) . 1.8kg to 2.5kg (battery)
- Features** : Smart charger with over-charging & over discharging protection
- : Relay output signal for power failure Alarm
- : LED indicators for AC and DC power supply

### External Antenna



- Model** : Ant3db3M
- Type** : 3db gain 900/1800Mhz Antenna
- Mount** : Magnetic base mounting
- Length** : 32 cm
- Features** : Boost up antenna signal in enclosed area

Authorised Distributor/Reseller

## INTERFACE



APLUS Messenger II (AM910)