

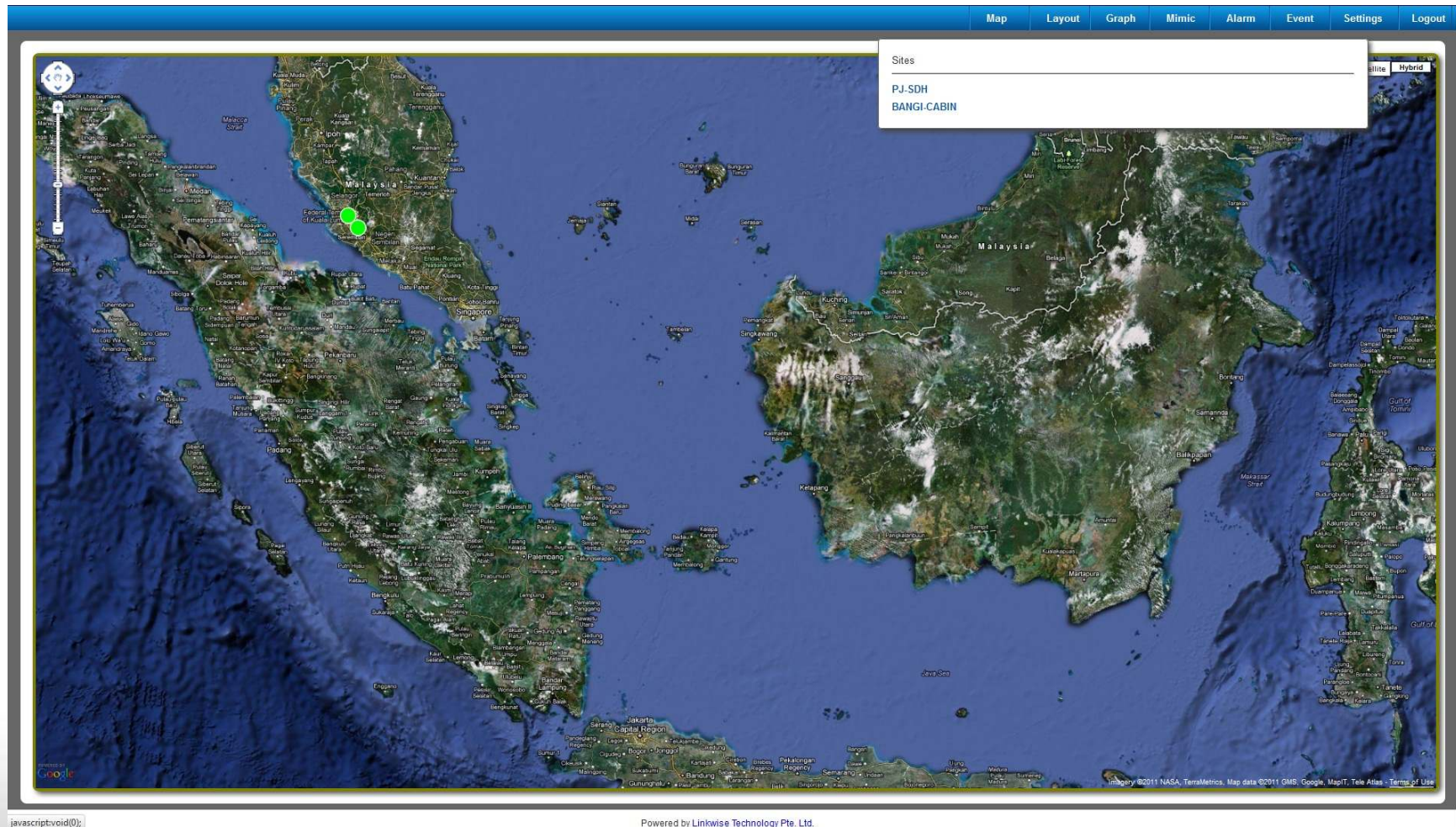
Scope of work

- Remote facility monitoring
- To supply and install Picobox units to monitor incoming AC, DC rectifier and room temperature
- A total of 27 remote sites throughout Malaysia
- Central monitoring of all sites at Headquarter
- Analyze data / decision making
- To generate data trending at the requested date and time
- Send alerts to users' mobile phones

Remote Stations Monitoring – Malaysia

FMS

Live Map – Indicating the location & status of each remote station



Device Management & Setting Page

Map Layout Graph Mimic Alarm Event Settings Logout

Device List

Add new I/O device

- New I/O Device
 - [AGC-080201 Picobox](#)
 - [AGC-080202 Picobox](#)
 - [DIO-080201 Picobox](#)
 - [DIO-080202 Picobox](#)
 - [Aplus Picobox](#)
 - [WMS-080202 Picobox](#)
 - [Generic device using Modbus ASCII protocol](#)
 - [Generic device using Modbus RTU protocol](#)
 - [Generic device using Modbus TCP Protocol](#)
 - [Generic Picobox device using status.xml](#)
 - [Carlo Gavazzi Controls WM12-DIN/ WM12-96](#)
 - [Schneider Electric Power Logic PM800](#)
 - [Contrec Heat Calculator Model 212](#)
 - [TTK FG-SYS Digital Control Unit](#)
 - [RMC-1 4K series, Picobox](#)
 - [RMC-2 4K series, Picobox](#)
 - [WEC-1 4K series, Picobox](#)
 - [WEC-2 4K series, Picobox](#)
 - [WEC-3 4K series, Picobox](#)
 - [WEC-1 5K series, Picobox](#)
 - [RMC-1 5K series, Picobox](#)
- [Import new device](#)

[device list](#)

List of added devices:

ID	Enable	Maintenance	Name	Description	Protocol
6	<input checked="" type="checkbox"/>	<input type="checkbox"/>	PJ-SDH	PJ-SDH-RMC1	http
8	<input checked="" type="checkbox"/>	<input type="checkbox"/>	BANGI-CABIN	BANGI-CABIN-RMC1	http
9	<input checked="" type="checkbox"/>	<input type="checkbox"/>	BANGI-CABIN (WEC1-1)	BANGI-CABIN (WEC1-1)	http
10	<input checked="" type="checkbox"/>	<input type="checkbox"/>	BANGI-CABIN (WEC1-2)	BANGI-CABIN (WEC1-2)	http
11	<input checked="" type="checkbox"/>	<input type="checkbox"/>	PJ-SDH (WEC1-1)	PJ-SDH (WEC1-1)	http
12	<input type="checkbox"/>	<input type="checkbox"/>	PJ-SDH (WEC1-2)	PJ-SDH (WEC1-2)	http
ALL	<input type="checkbox"/>	<input type="checkbox"/>			

Devices

I/O Devices

Communication Devices

Zones

Areas

Scripts

Logs

Data Log

Alarm Log

Event Log

Users and Groups

Users and Groups

My Profile

my profile

Alarms

Alarms Management

Alarms Status

Screens

SMS

SMS Management

Sms Outbox

Sent SMS

Received SMS

Email Management

Email Management

Expression Tags

Expression Tags Management

Expression Tags Status

Timers

Timers

Import/ Export

Import device(s)

Import tag(s)

Contact Management

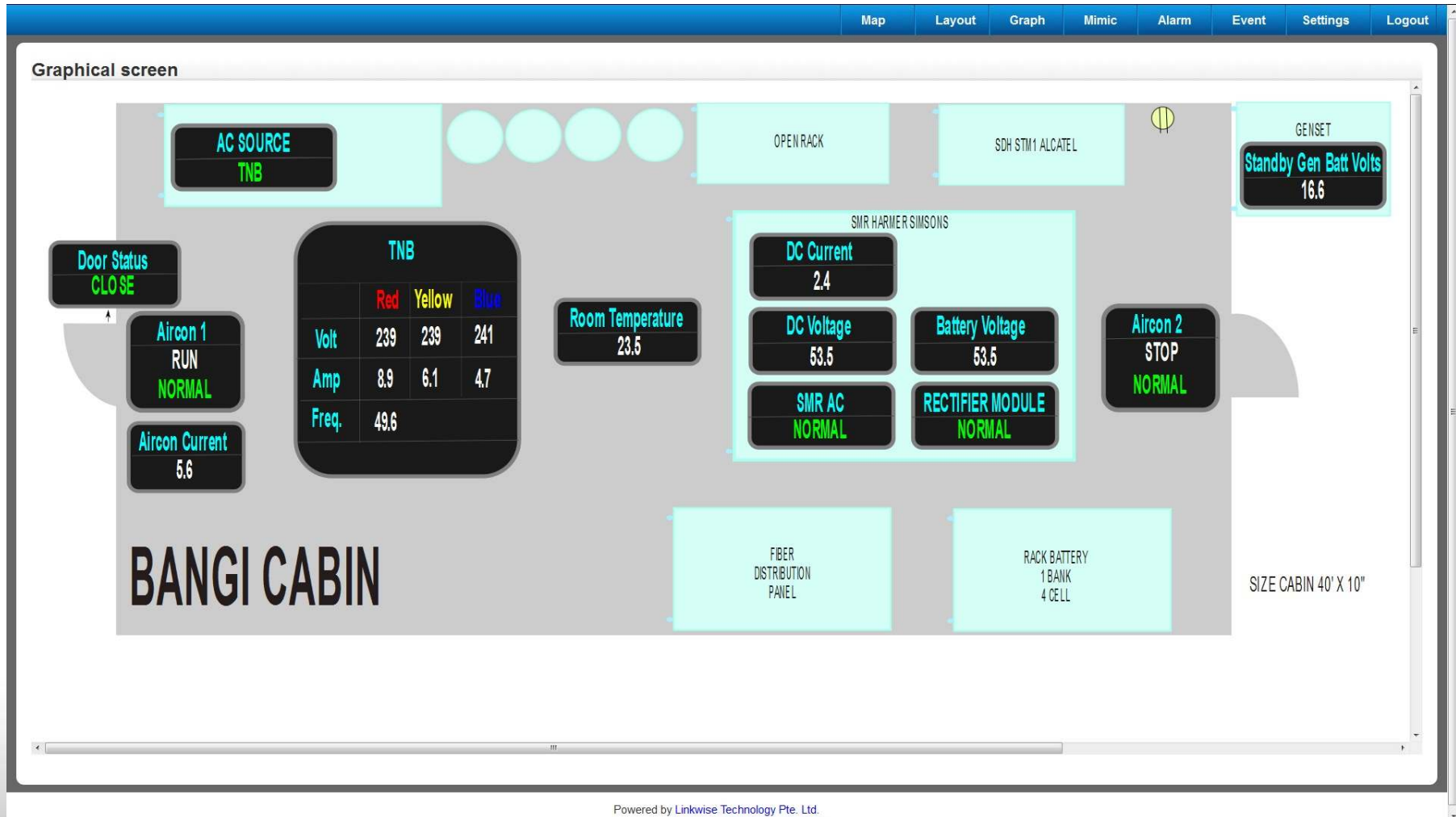
Contacts Management

javascript:void(0);

Powered by [Linkwise Technology Pte. Ltd.](#)



Floor Plan showing the live status of equipments being monitored



Mimic display showing the live status of each remote station

The screenshot shows a web-based monitoring interface with a navigation menu at the top: Map, Layout, Graph, Mimic, Alarm, Event, Settings, Logout. The main content area is titled 'Graphical screen' and contains two side-by-side panels for 'BANGI-CABIN' and 'PJ CITY'. Each panel lists alarm categories and their current status.

Station	Alarm Level	Parameter	Status
BANGI-CABIN	Critical Alarm	AC SUPPLY	TNB
	Major Alarm	SMR AC	NORMAL
		RECTIFIER MODULE	NORMAL
		Aircon 1	NORMAL RUN
		Aircon 2	NORMAL STOP
	Minor Alarm	Room Temperature	NORMAL
		Door Status	CLOSE
PJ CITY	Critical Alarm	AC SUPPLY	#
	Major Alarm	SMR AC	NORMAL
		RECTIFIER MODULE	NORMAL
		Aircon 1	RUN NORMAL
		Aircon 2	STOP NORMAL
	Minor Alarm	Room Temperature	NORMAL
		Door Status	CLOSE

Powered by [Linkwise Technology Pte. Ltd.](http://www.linkwisetech.com)



Event Logging for Facility Status & Monitoring

						Map	Layout	Graph	Mimic	Alarm	Event	Settings	Logout
Event Log													
6763	2011-05-03	18:07:45	usr	info	SmsOutbox-Device 13: 2011-05-03 18:07:45 (FARMS POC)>BANGI ALARM / AC Amp - Blue L->NORMAL->+60196635235 (sms_local)								
6762	2011-05-03	17:54:51	usr	info	SmsOutbox-Device 13: 2011-05-03 17:54:50 (FARMS POC)>BANGI ALARM / AC Amp - Blue L->BELOW 1A->+60162385091 (sms_local)								
6761	2011-05-03	17:54:51	usr	info	SmsOutbox-Device 13: 2011-05-03 17:54:50 (FARMS POC)>BANGI ALARM / AC Amp - Blue L->BELOW 1A->+60162385087 (sms_local)								
6760	2011-05-03	17:54:51	usr	info	SmsOutbox-Device 13: 2011-05-03 17:54:50 (FARMS POC)>BANGI ALARM / AC Amp - Blue L->BELOW 1A->+60196635235 (sms_local)								
6759	2011-05-03	17:35:49	usr	info	SmsOutbox-Device 13: 2011-05-03 17:35:48 (FARMS POC)>BANGI ALARM / Room Temp H->NORMAL->+60162385087 (sms_local)								
6758	2011-05-03	17:35:49	usr	info	SmsOutbox-Device 13: 2011-05-03 17:35:48 (FARMS POC)>BANGI ALARM / Room Temp H->NORMAL->+60196635235 (sms_local)								
6757	2011-05-03	17:35:49	usr	info	SmsOutbox-Device 13: 2011-05-03 17:35:48 (FARMS POC)>BANGI ALARM / Room Temp H->NORMAL->+60162385091 (sms_local)								
6756	2011-05-03	17:20:23	usr	info	SmsOutbox-Device 13: 2011-05-03 17:20:21 (FARMS POC)>BANGI ALARM / Room Temp H->HIGH TEMP->+60162385091 (sms_local)								
6755	2011-05-03	17:20:21	usr	info	SmsOutbox-Device 13: 2011-05-03 17:20:21 (FARMS POC)>BANGI ALARM / Room Temp H->HIGH TEMP->+60196635235 (sms_local)								
6754	2011-05-03	17:20:21	usr	info	SmsOutbox-Device 13: 2011-05-03 17:20:21 (FARMS POC)>BANGI ALARM / Room Temp H->HIGH TEMP->+60162385087 (sms_local)								
6753	2011-05-03	16:55:21	usr	info	SmsOutbox-Device 13: 2011-05-03 16:55:20 (FARMS POC)>BANGI ALARM / Room Temp H->NORMAL->+60162385091 (sms_local)								
6752	2011-05-03	16:55:21	usr	info	SmsOutbox-Device 13: 2011-05-03 16:55:20 (FARMS POC)>BANGI ALARM / Room Temp H->NORMAL->+60162385087 (sms_local)								
6751	2011-05-03	16:55:21	usr	info	SmsOutbox-Device 13: 2011-05-03 16:55:20 (FARMS POC)>BANGI ALARM / Room Temp H->NORMAL->+60196635235 (sms_local)								
6750	2011-05-03	16:41:56	usr	info	SmsOutbox-Device 13: 2011-05-03 16:41:54 (FARMS POC)>BANGI ALARM / Room Temp H->HIGH TEMP->+60162385087 (sms_local)								
6749	2011-05-03	16:41:55	usr	info	SmsOutbox-Device 13: 2011-05-03 16:41:54 (FARMS POC)>BANGI ALARM / Room Temp H->HIGH TEMP->+60162385091 (sms_local)								
6748	2011-05-03	16:41:55	usr	info	SmsOutbox-Device 13: 2011-05-03 16:41:54 (FARMS POC)>BANGI ALARM / Room Temp H->HIGH TEMP->+60196635235 (sms_local)								
6747	2011-05-03	16:18:15	usr	info	SmsOutbox-Device 13: 2011-05-03 16:18:14 (FARMS POC)>BANGI ALARM / Room Temp H->NORMAL->+60196635235 (sms_local)								
6746	2011-05-03	16:18:15	usr	info	SmsOutbox-Device 13: 2011-05-03 16:18:14 (FARMS POC)>BANGI ALARM / Room Temp H->NORMAL->+60162385091 (sms_local)								
6745	2011-05-03	16:18:15	usr	info	SmsOutbox-Device 13: 2011-05-03 16:18:14 (FARMS POC)>BANGI ALARM / Room Temp H->NORMAL->+60162385087 (sms_local)								
6744	2011-05-03	15:52:23	usr	info	SmsOutbox-Device 13: 2011-05-03 15:52:21 (FARMS POC)>BANGI ALARM / Room Temp H->HIGH TEMP->+60162385087 (sms_local)								
6743	2011-05-03	15:52:22	usr	info	SmsOutbox-Device 13: 2011-05-03 15:52:21 (FARMS POC)>BANGI ALARM / Room Temp H->HIGH TEMP->+60196635235 (sms_local)								
6742	2011-05-03	15:52:22	usr	info	SmsOutbox-Device 13: 2011-05-03 15:52:21 (FARMS POC)>BANGI ALARM / Room Temp H->HIGH TEMP->+60162385091 (sms_local)								
6741	2011-05-03	15:51:18	usr	info	SmsOutbox-Device 13: 2011-05-03 15:51:16 (FARMS POC)>BANGI ALARM / Room Temp H->NORMAL->+60162385087 (sms_local)								
6740	2011-05-03	15:51:18	usr	info	SmsOutbox-Device 13: 2011-05-03 15:51:16 (FARMS POC)>BANGI ALARM / Room Temp H->NORMAL->+60162385091 (sms_local)								
6739	2011-05-03	15:51:18	usr	info	SmsOutbox-Device 13: 2011-05-03 15:51:16 (FARMS POC)>BANGI ALARM / Room Temp H->NORMAL->+60196635235 (sms_local)								
6738	2011-05-03	15:50:19	usr	info	SmsOutbox-Device 13: 2011-05-03 15:50:16 (FARMS POC)>BANGI ALARM / Room Temp H->HIGH TEMP->+60162385087 (sms_local)								
6737	2011-05-03	15:50:18	usr	info	SmsOutbox-Device 13: 2011-05-03 15:50:16 (FARMS POC)>BANGI ALARM / Room Temp H->HIGH TEMP->+60196635235 (sms_local)								
6736	2011-05-03	15:50:17	usr	info	SmsOutbox-Device 13: 2011-05-03 15:50:16 (FARMS POC)>BANGI ALARM / Room Temp H->HIGH TEMP->+60162385091 (sms_local)								
6735	2011-05-03	15:49:16	usr	info	SmsOutbox-Device 13: 2011-05-03 15:49:14 (FARMS POC)>BANGI ALARM / Room Temp H->NORMAL->+60196635235 (sms_local)								
6734	2011-05-03	15:49:16	usr	info	SmsOutbox-Device 13: 2011-05-03 15:49:14 (FARMS POC)>BANGI ALARM / Room Temp H->NORMAL->+60162385091 (sms_local)								
6733	2011-05-03	15:49:16	usr	info	SmsOutbox-Device 13: 2011-05-03 15:49:14 (FARMS POC)>BANGI ALARM / Room Temp H->NORMAL->+60162385087 (sms_local)								
6732	2011-05-03	14:38:20	usr	info	SmsOutbox-Device 13: 2011-05-03 14:38:18 (FARMS POC)>BANGI ALARM / Door Status->CLOSE->+60162385087 (sms_local)								
6731	2011-05-03	14:38:20	usr	info	SmsOutbox-Device 13: 2011-05-03 14:38:18 (FARMS POC)>BANGI ALARM / Door Status->CLOSE->+60162385091 (sms_local)								
6730	2011-05-03	14:38:20	usr	info	SmsOutbox-Device 13: 2011-05-03 14:38:18 (FARMS POC)>BANGI ALARM / Door Status->CLOSE->+60196635235 (sms_local)								
6729	2011-05-03	14:21:18	usr	error	Tag 454/SMP ACV no. update: Status not updated yet								

<http://119.75.204.15:10003/log/event/>

Powered by [Linkwise Technology Pte. Ltd.](http://www.linkwisetech.com)

